

02/2022

eEscape

Join the eFuture!

The EV revolution is here and ESCAPE is showing the way forward with a brand new line of all-electric eESCAPE units.

These are not concepts or in development, the eESCAPE units are available now.



eVista Page 10



eVista XL Page 18



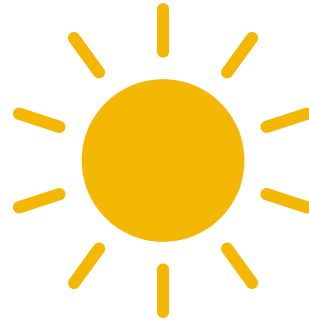
eONE Page 25



N2 Page 32

eEscape

ESCAPE has been offering electric and solar options for years, so when engineering the eESCAPE units, we not only took into account all of our knowledge from years of innovation, but also customer feedback on the items that mattered most to them.



Sustainability

Being Earth-friendly has always been a main focus at ESCAPE. Living small is simply better for the planet. With the eESCAPE series, we have taken it up a notch as new materials and products have become available. For example, using new Green Gold Certified insulating options that are not only people friendly, but primarily made of recycled materials. Other notables include sustainably grown wood siding and paneling, LED lighting that uses almost no power and construction methods that are more efficient and time effective, which reduces the actual energy needed to build each unit. Plus, customers will be able to run most of the units on solar power or directly from new EV cars and trucks. It all adds up to a better, more sustainable way forward.

The eESCAPE series showcases our attention to detail with quiet, clean interiors, functional spaces with lots of storage, USB outlets and web connectivity, light neutral colors with warm wood finishes and panorama views of the outdoors. eESCAPE spaces are beautiful, natural and inviting.

Flexibility

For most companies, EV means you pay more. We believe the opposite and have priced eESCAPE units starting below our basic ESCAPE models. This means customers can enjoy the natural, clean aesthetic of the eESCAPE series at an affordable price that fits their individual needs and desires. And yes, long term financing is available with zero down payments for those who qualify.

Livability

We want everyone to have the ability to customize, to put a personal stamp on their ESCAPE. The eESCAPE series was designed with this in mind and provides the space for you to make your statement. No wheel wells in the way, plus lots of shelving and strategic options allow for flexible design and a myriad of uses...AirBnb, ADU, private retreat, guest house, vacation getaway, private office, studio...the uses are almost limitless!

Affordability

Availability

A big problem for many customers buying EVs is time... specifically, getting a unit quickly. EV wait lists and long lead times are common. But eESCAPE units are not just a great idea or concept, they already exist. In other words, you normally can have it right now! And if it is not in stock, chances are it will be within weeks...not in six months or a year.

Simplicity



Just plug it in

eEscape has a simple cord that you just plug in.
True plug and play!



new & exclusive From Escape

YES!

Yes, customers can still order our other great designs. And yes, we will continue to be the fastest RV tiny home company in America for getting your unit to you quickly. But the leap forward in the EV revolution has been made and if beauty, affordability and livability is what you seek, and you want it now, the eESCAPE series is a great choice.

eVista



eVISTA

\$43,600

Financing as low as: \$299/mo

We do deliver, the cost depends on location

BUY NOW

FINANCING

eVista in Stock

eVista is an all-electric (EV) ESCAPE with a clean, natural aesthetic. The floor plan offers plenty of open space for all kinds of uses, including Airbnb or rental unit, inspiring office, separate guest house or ADU, or a private personal haven. The dramatic end window wall, plus multiple opening windows, enhances the space with natural light and gives a sense of being connected to the outdoors...this may be the best Vista yet!

Important Note:

The eVista units are production units we normally have in stock and are not for pre-order. To order a Vista or Vista Boho with options, please see escapetraveler.net, click on the unit you would like and submit a quote.



eVISTA Options



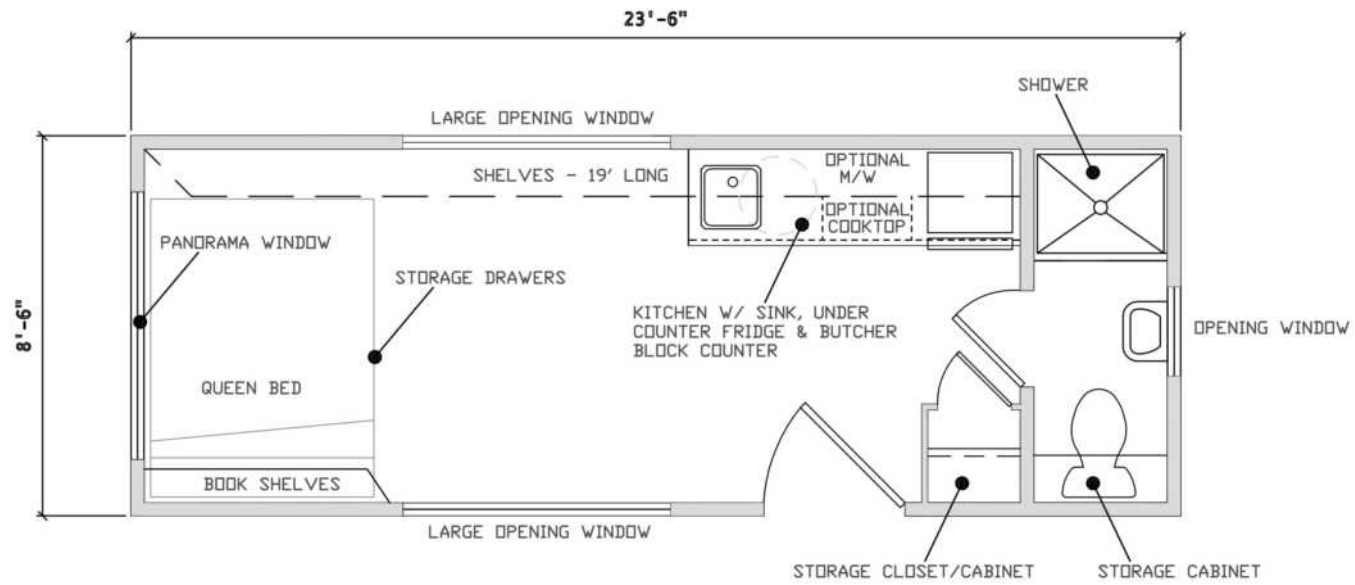
eVISTA Video

Click Picture

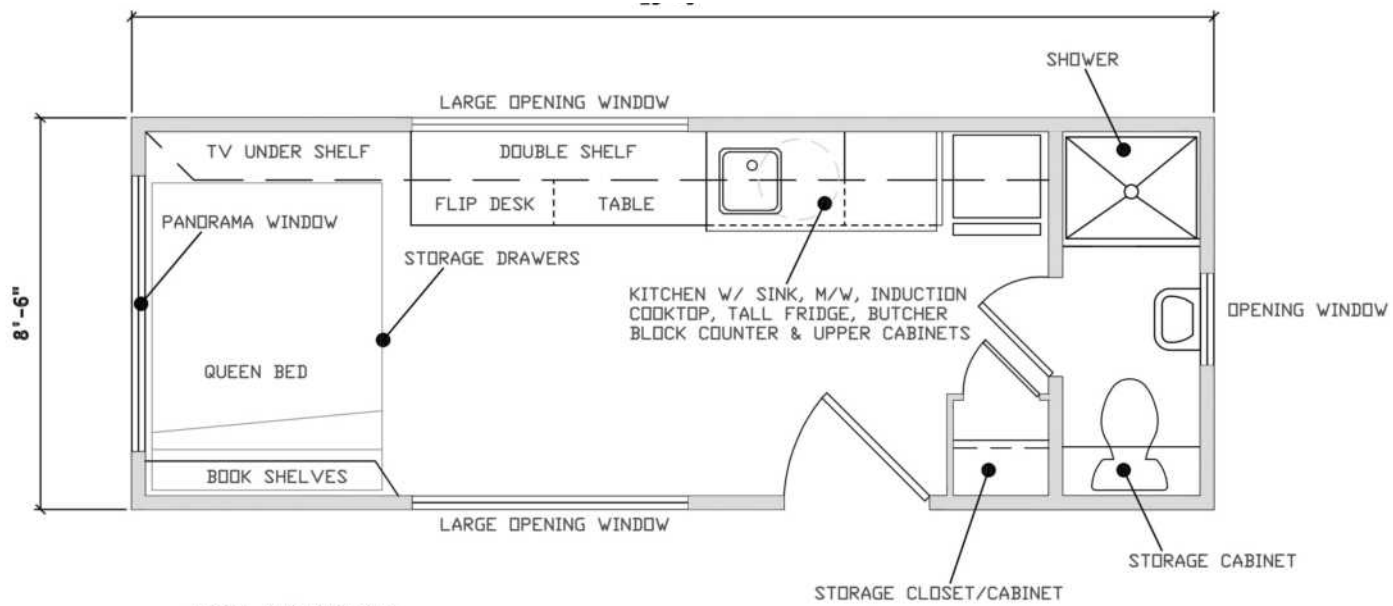


eVista Package

- Size: 23'6" (28' w/hitch) x 8'6"W x 11'H
- Weight: 8820 lbs
- Custom trailer, steel floor joists, steel rodent resistant underbelly, radial tires, wt. rated axles, safety hitch, 2 5/16" ball, leveling jacks, DOT lighting
- 2x4 16" OC walls
- 30A/120V power center
- Low-E, thermopane windows
- EcoRoll, GREENGUARD Gold certified, Energy Star insulation (Variation: Wool)
- Vertical rough sawn wood siding, custom stain finish, aluminum trim
- Metal roof with 40 year warranty
- Steel entry door with handle set and deadbolt (Variation: steel door w/window)
- Coordinating exterior sconce
- Folding steps
- Sealed, sustainably grown Birch interior
- Wood bathroom door
- Maple composite flooring
- Window coverings: light filtering honeycomb shades
- Energy saving LED lighting
- Electric water heater 32Gal equivalent
- Electric heat
- Kitchen: Custom wood cabinetry, butcher block top, under counter refrigerator, deep stainless sink and designer faucet, long shelving
- Bathroom features: Single bowl sink, chrome faucet, 36" shower, Toto toilet, low sohn exhaust fan, LED lighting, hardware, storage cabinet + shelf, obscure glass opening window
- Interior Storage includes: Tall storage closet, large drawer under bed, multiple long shelves, bathroom storage cabinet
- Living area features: large multi-purpose area, LED lighting, shelf storage, large opening window(s), USB outlets
- Bed area features: Huge glass wall, Queen bed, LED lighting, bookshelf, under bed storage, USB outlet
- Smoke detector and fire extinguisher
- Wall pegs
- **Unit variations can include one or more of the following:**
- Upgraded 50A/240V power center
- Smart TV, mounts + wiring
- Air Exchanger
- Washer/Dryer Combo
- Multi-purpose flip tables
- Stone top
- HE A/C Heat Pump
- Tall refrigerator/freezer
- Induction Cooktop (2-burner) + Hood
- M/W + Cabinets
- Window Coverings Blackout Upgrade
- Steel Door with window



eVISTA



eVISTA W/ OPTIONS

BUY NOW

eFuture

sales@escapehomes.us

www.escapetraveler.net

eVista XL



eVISTA XL

\$51,920

Financing as low as: \$389/mo

We do deliver, the cost depends on location

BUY NOW

FINANCING

eVista XL in Stock

eVista XL is an all-electric (EV) ESCAPE with a clean, natural aesthetic. The floor plan offers plenty of open space for all kinds of uses, including Airbnb or rental unit, inspiring office, separate guest house or ADU, or a private personal haven. The separate bedroom with walk around queen bed is perfect for anyone desiring privacy from the main living area, plus multiple opening windows let fresh air in and capture great views of the outdoors...a unique, new Vista!

Important Note:

The eVista XL units are production units we normally have in stock and are not for preorder. To order a Vista or Vista Boho with options, please see escapetraveler.net, click on the unit you would like and submit a quote.



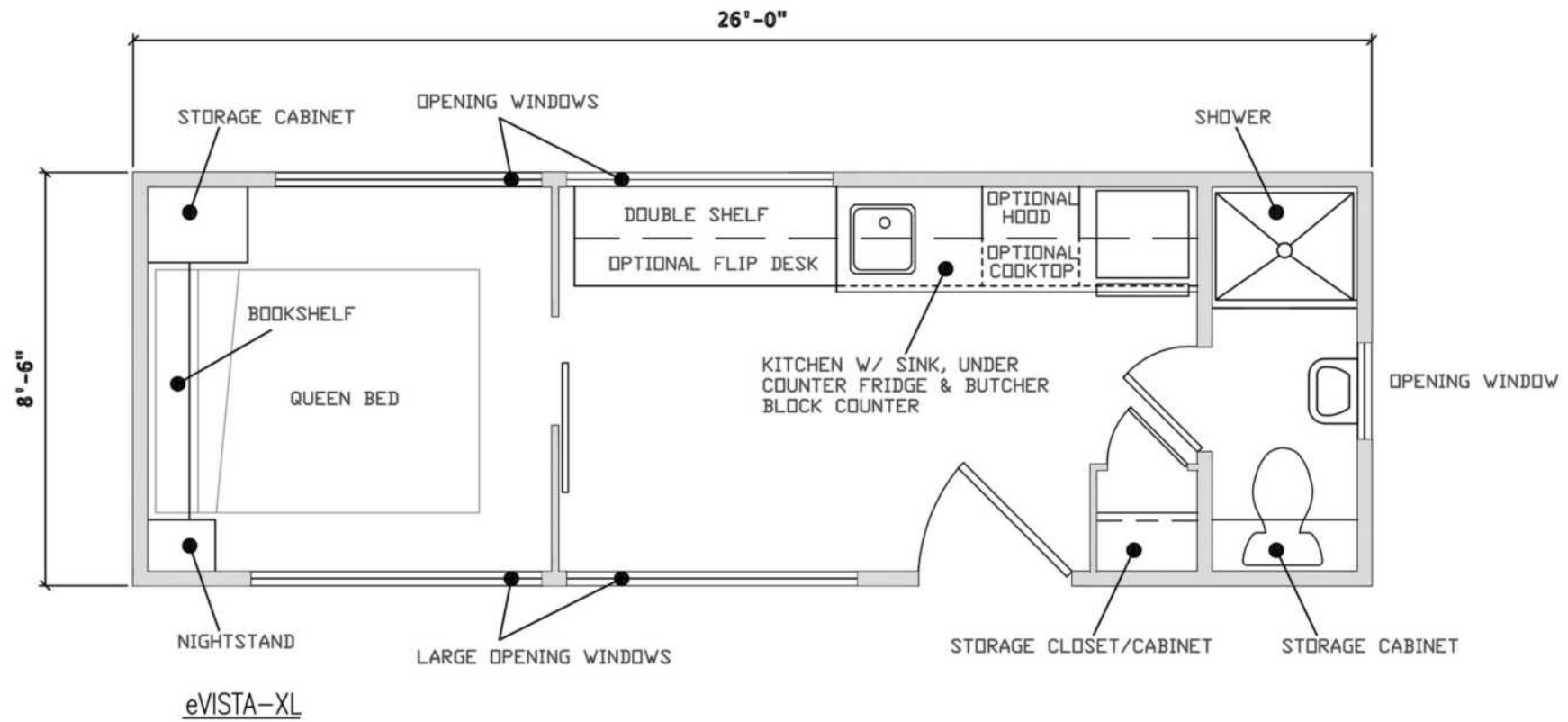
eVISTA XL Video

Click Picture



eVista XL Package

- Size: 26' (31' w/hitch) x 8'6"W x 11'H
- Weight: 9500 lbs
- Custom trailer, steel floor joists w/rust resistant coating, insulated, radial tires, wt. rated axles, safety hitch, 2 5/16" ball, leveling jacks, DOT lighting
- 2x4 16" OC walls
- 30A/120V power center
- Low-E, thermopane windows
- EcoRoll, GREENGUARD Gold certified insulation (Variation: Wool)
- Vertical rough sawn wood siding, custom stain finish, aluminum trim
- Metal roof with 40 year warranty
- Steel entry door with handle set and deadbolt (Variation: steel door with window)
- Coordinating exterior sconce
- Folding steps
- Sealed, sustainably grown Birch interior
- Wood bathroom door
- Maple composite flooring
- Window coverings: light filtering honeycomb shades
- Energy saving LED lighting
- Electric water heater 32Gal equivalent
- Electric heat
- Kitchen: Custom wood cabinetry, butcher block top, under counter refrigerator, deep stainless sink and designer faucet, long shelving
- Bathroom features: Single bowl sink, chrome faucet, 36" shower, Toto toilet, low sohn exhaust fan, LED lighting, hardware, mirror, storage cabinet + shelf, obscure glass opening window
- Interior Storage includes: Tall storage closet, large drawer under bed, multiple long shelves, bathroom storage cabinet
- Living area features: large multi-purpose area, LED lighting, shelf storage, large opening window(s), USB outlets.
- Bedroom features: Private bedroom with opening windows, Queen walk around bed, LED lighting, bookshelf, under bed storage, USB outlet
- Smoke detector and fire extinguisher
- Wall pegs
- **Unit variations can have one or more of the following:**
- Upgraded 50A/240V power center
- Induction Cooktop (2-burner) + Hood
- Tall refrigerator/freezer
- M/W + Cabinets
- Smart TV, mounts + wiring
- Air Exchanger
- Washer/Dryer Combo
- Multi-purpose flip tables
- Stone top
- HE A/C Heat Pump
- Window Coverings Blackout Upgrade
- Steel Door with window



BUY NOW

eFuture

sales@escapehomes.us

www.escapetraveler.net

eONE



eONE

\$63,210

Financing as low as: \$392/mo

We do deliver, the cost depends on location

BUY NOW

FINANCING

eONE in Stock

eONE is an all-electric (EV) version of our very popular ESCAPE ONE unit. The floor plan is different than the normal ONE showcasing a huge back loft, plus a larger kitchen and storage area...perfect for all kinds of uses, including Airbnb or rental unit, separate guest house or ADU, or a private personal haven. Enjoy great design, soaring ceilings, plus multiple opening windows and an incredible amount of usable space...this may be the best ONE yet!

Important Note:

The eONE units are production units we normally have in stock and are not for pre-order. To order a ONE with options, please see escapetraveler.net, click on the ONE unit and submit a quote.



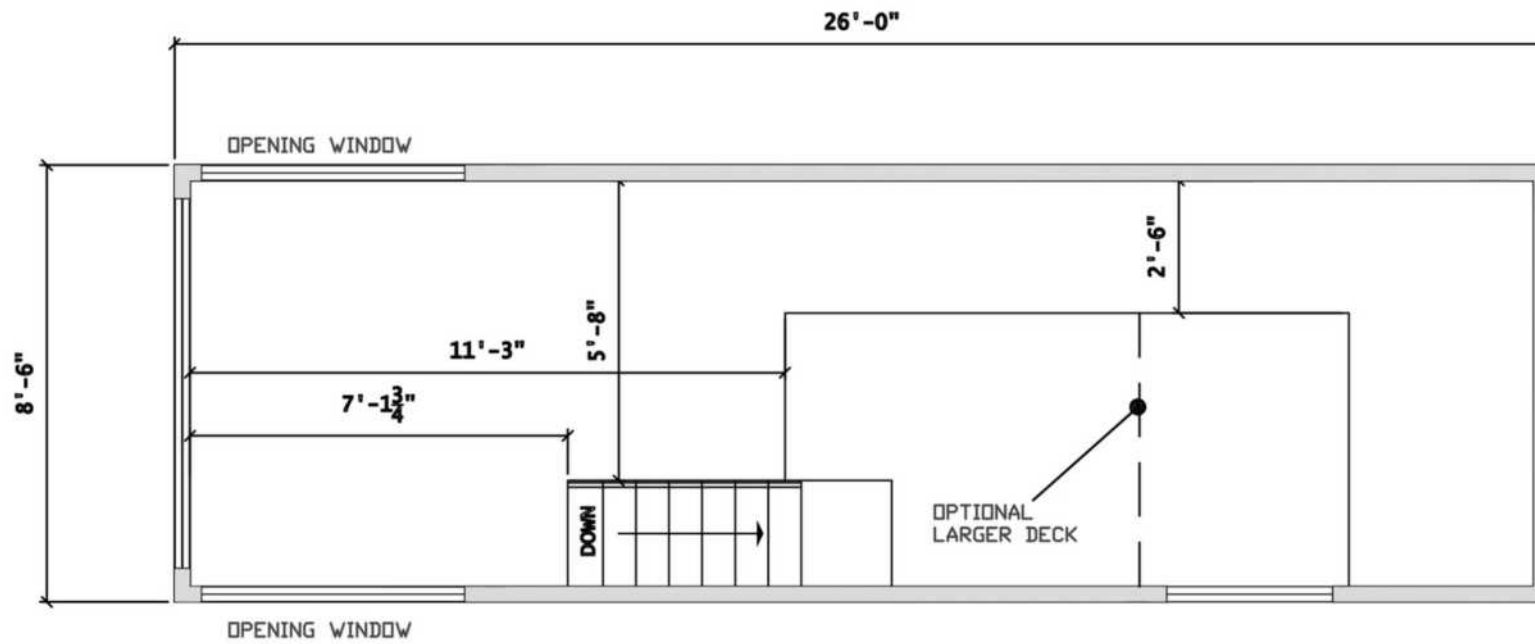
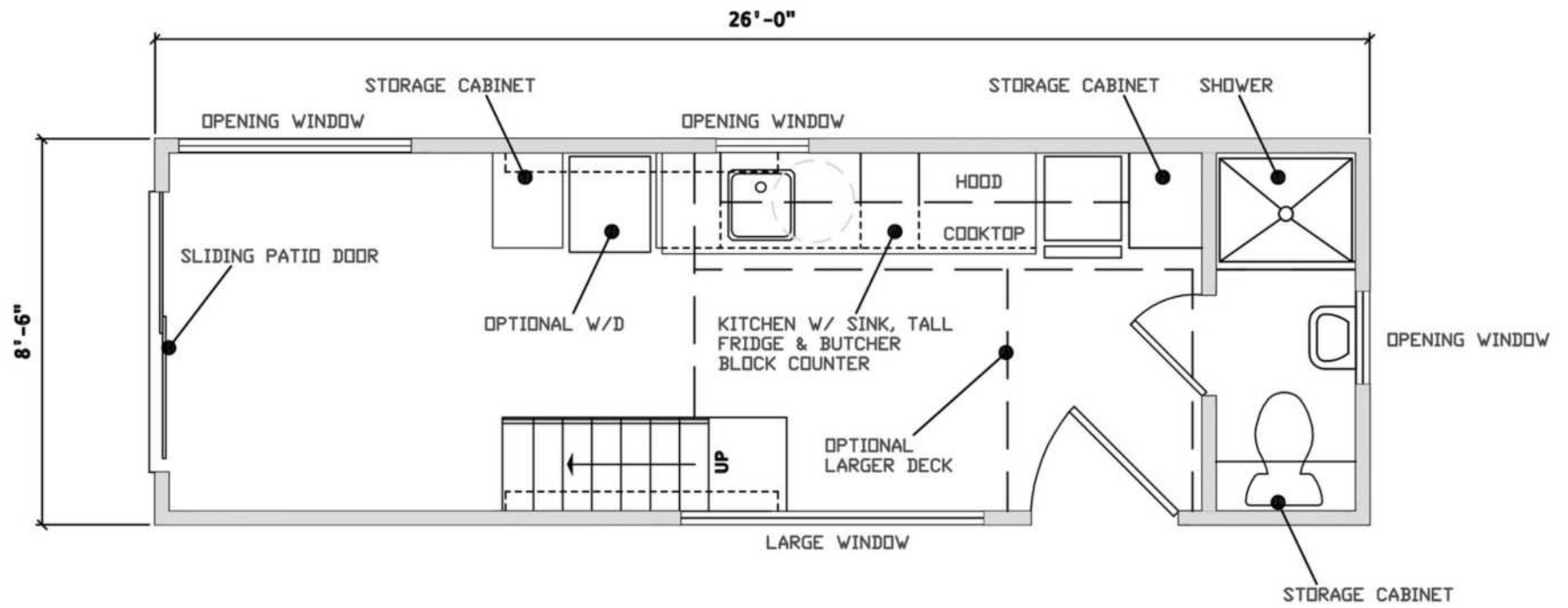
eONE Video

Click Picture



eONE Package

- Size: 26' (31' w/hitch) x 8'6"W x 13'6"H
- Weight: 12000 lbs
- Custom trailer, steel floor joists w/rust resistant coating, insulated, radial tires, wt. rated axles, safety hitch, 2 5/16" ball, leveling jacks, DOT lighting
- 2x4 16" OC walls
- 30A/120V power center
- Low-E, thermopane windows
- EcoRoll, GREENGUARD Gold certified insulation (Variation: Wool)
- T&G siding, custom stain finish, aluminum trim
- Metal roof with 40 year warranty
- Steel entry door with handle set + deadbolt (Variation: steel door with window)
- Coordinating exterior scone
- Folding steps
- Sealed, sustainably grown Birch interior
- Wood bathroom door
- Maple composite flooring
- Energy saving LED lighting
- Electric water heater 32Gal equivalent
- Electric heat
- Kitchen: Custom wood cabinetry, butcher block top, under counter refrigerator, deep stainless sink and designer faucet, long shelving
- Bathroom features: Single bowl sink, chrome faucet, 36" shower, Toto toilet, low sohn exhaust fan, LED lighting, hardware, mirror, storage cabinet + shelf, obscure glass opening window
- Interior Storage includes: Tall storage cabinet, bathroom storage cabinet
- Multi-purpose living area features: LED lighting, large opening window(s), can be dining area, office or bedroom
- Large loft, easy climb stairs, panoramic window, two opening windows
- Second front loft with ladder
- Smoke detector and fire extinguisher
- Wall pegs
- **Units variations can have one or more of the following:**
- Upgraded 50A/240V power center
- Window Coverings
- Induction Cooktop (2-burner) + Hood
- Tall refrigerator/freezer
- Venting M/W
- Large Kitchen Pkg + Cabinetry
- USB outlets
- Smart TV, mounts + wiring
- Air Exchanger
- Washer/Dryer combo
- Kitchen Stone Top
- HE A/C Heat Pump
- Oversized front deck with connecting walkway
- Rear Sliding Patio Door
- Panorama Window in lower living room
- Extra Front Window on lower level
- Steel Door with window



BUY NOW

eFuture

sales@escapehomes.us
www.escapetraveler.net

N2



N2

\$143,000

We do deliver, the cost depends on location

BUY NOW

eONE in Stock

ESCAPE N2 is a limited edition, custom designed all-electric (EV) unit designed in keeping with the larger N1 produced by ESCAPE in 2021. The style is Mid-Century and the open floor plan features a huge wall of glass (opening glass doors), a great living and dining area, plus an amazing kitchen with full-size stainless appliances, stone tops, electric range with convection oven, venting M/W, large French door refrigerator over freezer with ice maker and plenty of cabinet storage. The private bedroom has a large opening glass door and a wonderful amount of storage space with two tall cabinets framing the queen bed plus under bed drawers...not to mention, this unit has a laundry center and full-size bathroom with stone top vanity and bia tile shower with slidina alass door.

The ESCAPE N2 is perfect for all kinds of uses, including a private personal haven, Airbnb or rental unit, or separate guest house or ADU. Enjoy great design, lots of natural light with huge opening doors and an incredible amount of usable space...this N2 has it all!

Important Note:

The eONE units are production units we normally have in stock and are not for pre-order. To order a ONE with options, please see escapetraveler.net, click on the ONE unit and submit a quote.



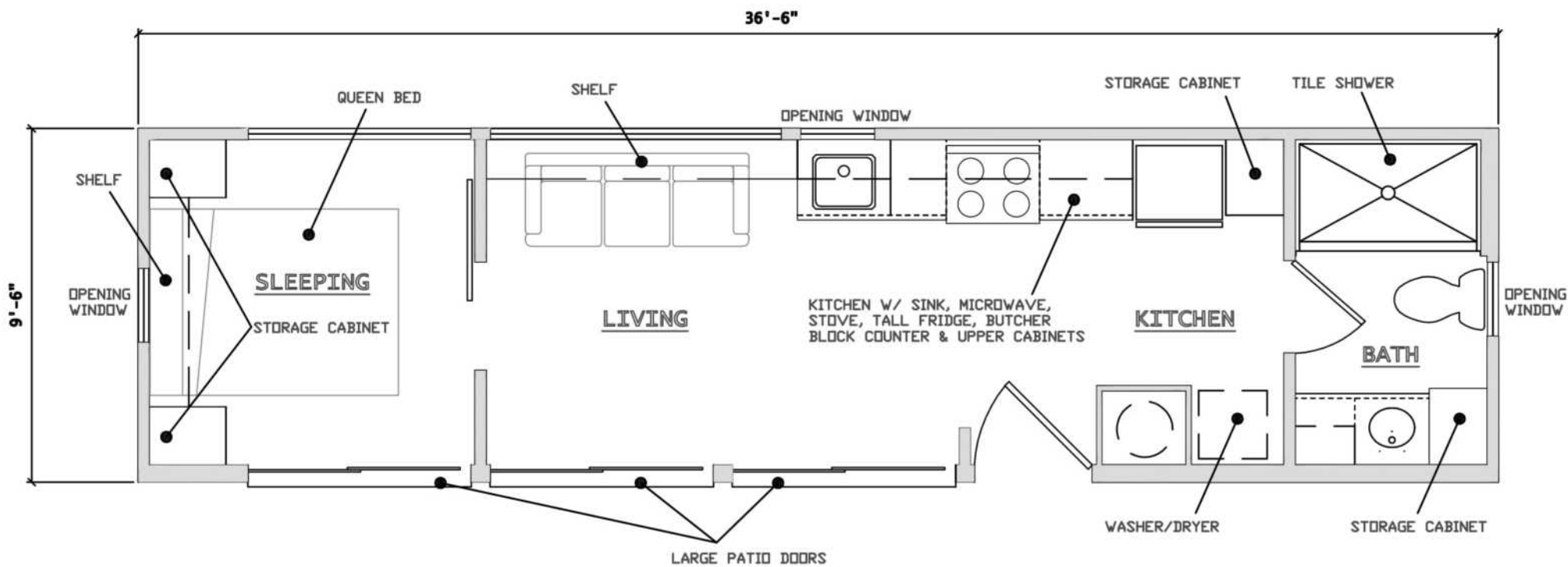
N2 Video

Click Picture



Custom Designer Package- all of this is included

- Size: 36'6" - 40'L x 9'6"W x 11'H
- All-Electric Unit with 100a panel
- Energy saving LED lighting with dimmers
- Low-E, thermopane windows and sliding glass doors
- 21' opening wall of glass
- Steel siding with aluminum trim
- Steel roof with 40 year warranty
- Full light 8' entry door
- Sealed white wood walls
- Frosted full light bathroom and bedroom doors
- Maple Composite flooring
- Designer honeycomb blinds...blackout in bedroom
- Kitchen features: Custom white cabinetry & shelves, stone counter tops, Energy Star appliances including stainless dishwasher, stainless convection range and venting M/W, tall stainless refrigerator/ freezer with Ice Maker, deep stainless sink with designer faucet and large pantry
- Laundry center with stacked W/D
- USB outlets
- Bedroom features: Double tall closets, built-in queen bed with nightstands, under bed drawers, USB outlets, opening windows, large book shelf, large opening glass door
- Bathroom features: Frosted full light door, stone vanity with designer faucet, linen closet, storage cabinet and drawers, 60" tile shower with frameless glass door, Toto toilet, low sohn exhaust fan, large mirror, LED lighting, towel bars & hardware
- Living area features: Huge opening window wall, book shelf, LED lighting, Smart TV
- High Efficiency A/C/heat pump
- Zoned heating
- Plumbing: Pex Manifold System
- Smoke/CO detectors and fire extinguisher



ESCAPE N-2

BUY NOW

eFuture

sales@escapehomes.us
www.escapetraveler.net